



# Lewis County Soil & Water Conservation District

# Conservation News

W I N T E R 2 0 2 4 / 2 0 2 5

## Board of Directors:

**Ashley Marolf**  
Chairman

**Andrea Moroughan**  
Legislator/Vice-Chair

**Thomas Kalamas**  
Legislator/Secretary

**Brian Reape**  
Farm Bureau Rep.

**Fred Munk**  
Member At Large

## SWCD Staff:

**Nichelle Swisher**  
District Manager

**Michael Durant**  
District Technician

**Carla Yaw**  
District Treasurer

**Alexis Lyndaker**  
Watershed  
Ag Conservation  
Specialist

Like Us On



facebook

Like and follow us on Facebook to keep up to date on SWCD happenings, and be first to know of office closures!

## SWCD Secures Funding through NYS Climate Resilient Farming (CRF) - Round 8

The Lewis County Soil and Water Conservation District was awarded a grant for a Lewis County Farm to implement Nutrient Management Practices through Round 8 of the Climate Resilient Farming (CRF) Program. These projects aim to help New York's farmers reduce greenhouse gas emissions, protect water quality, ensure soil health, and increase on-farm resiliency to the effects of a changing climate.

Funding for this program is made available through the Environmental Protection Fund, within the "Climate Change Mitigation and Adaption" account. Track 3A, Healthy Soils NY, funds systems and best management practices (BMPs) that support soil health and agroforestry. The total state share amount awarded through this round of funding was **\$855,209.00**, with a total project cost of \$1,449,786.00. A total of 107 applications requesting \$48.6 million were received through this proposal, which consisted of six different tracks including:

- 1A: Livestock Management: Alternative Waste Management and Precision Feed Management
- 1B: Manure Storage Cover and Methane Capture Projects
- 2: Adaption and Resiliency
- 3A: Healthy Soils NY
- 3B: Soil Health Systems
- 4: Agriculture Forestry Management

Within track 3A, our proposal ranked 19th out of 42.

Collectively, the projects are estimated to reduce greenhouse gases by 120,000 metric tons of carbon dioxide equivalent per year. This number is nearly double from the previous round of funding through CRF.

## Newly Formed Black River Watershed Coalition

The Black River Watershed Coalition of Districts is a collaborative effort among 5 Soil and Water Conservation Districts including Herkimer, Hamilton, Jefferson, Lewis and Oneida County. While the Districts have worked together in the past, the relationship is now formalized among the 5 Soil and Water Conservation District Boards and the New York State Soil and Water Conservation Committee. *The mission of the Black River Watershed Coalition is to educate the community about watershed management initiatives and to cooperatively implement conservation within the Black River Watershed to improve natural resources.*

Within the watershed there are 4,000 miles of streams, 500 lakes and ponds, 35,000 acres and 19 subwatersheds. The coalition will work together with Districts and other partners to implement watershed management plan recommendations based on water quality and natural resource needs. The coalitions next steps include establishing by-laws, common project goals, evaluating water quality data reported by Upstate Freshwater Institute, prioritize watershed best management practices and seek funding for these implementation projects. We are very excited about this partnership and look forward to preserving, protecting and enhancing the use of our soil, water and related resources collectively.

# 2025 Tree Sale: What You Should Know

Each year we receive questions regarding our order form. We would like to take the opportunity to explain a few things. Lets start with the basics. Everything we sell is **Bare Root** or lacking a root ball and it does not have soil surrounding its roots. **Seedlings** are grown from seeds that are planted in a bed together and are “bare rooted” when extracted from the soil to be packaged for distribution. **Transplants** are older seedlings that have been moved into more widely spaced rows where they have had more room to grow. **Coniferous** trees produce cones and do not drop their “leaves” in the winter while **Deciduous** trees lose their leaves annually. All of our deciduous species are seedlings, while all of our coniferous species are transplants.

As you look at the order form, the first thing you will see is the **Species** name and **Approximate Size**. In addition to the estimated size in inches, you will see two numbers with a dash (2-2). The number before the dash indicates the number of years it was raised in a seed bed. The number following the dash is the number of years it has been transplanted on its own. Adding these two numbers together gives you the age of the tree. Sometimes you will see something like 2-2/P+2, meaning this particular tree is 4 years old, 2 years in a seed bed then 2 years on its own, or it was started as a plug (P) in its own plastic tube then moved out on its own for two more years. Please keep in mind the sizes listed are approximate sizes given to us by our supplier and are not guaranteed. The **Zone** refers to the extreme temperatures that the plant can tolerate and grow successfully. The lower the number the greater the cold tolerance. The **Soil Preference** defines the most suitable soil type that the tree can grow in, although other soil types do not preclude it from growing. Use the guide at the bottom of the form for the soil preference definitions. The **Growth Rate** lets you know if the tree will grow quickly. Some species grow much faster than others. The **Sun Preference** column displays full sun, partial sun, or full shade graphics depicting the preference of each species.

Our **Bare Root Deciduous and Coniferous Trees** are sold in packs of **10, 20, 50, or 100**. As you look across the order form at the prices, look up to find the corresponding quantity. **Shrubs and Fruit** are sold individually and the each price is listed. Bare root shrubs are similar to deciduous trees at our sale. Some of them are not branched and only require the root system to establish when planting. **Packets** contain two of each species listed for the price shown. **Wildflower Seeds** are available in two varieties; Sunny (all perennials) and Partial Shade (a mix of both perennials and annuals). Each variety is available in two sizes, 1 ounce or 4 ounce, and the price for each is listed. We also offer Fertilizer Tablets and Marking Flags. The **Fertilizer Tablets** that we sell are N-P-K, 20-5-10 (Nitrogen, Phosphorus and Potassium) and each tablet will feed for up to two years. These are not meant to be tossed in the hole when you plant your tree and should not be used on seedlings! Fertilizer directly touching roots can burn them. The best way to use the tablets is after the transplant is planted back to the original depth and covered with soil, a hole is poked off to the side of the trunk at a diagonal angle and the tablet is put inside so rainfall can gradually dissipate the nutrients of the tablets to the roots over time. The **Marking Flags** are pink flags on 36” wire posts that can be used to help identify where you planted your smaller seedlings.

Some people ask if they will need a trailer to pick up their trees. The answer is no. Most packed orders can be carried in your arms. If you order 100 or more, the trees will most likely be packed in 4-5’ boxes that would easily fit in your trunk or backseat. All of our orders are hand packed by our staff. We add a root gel to keep moisture on the roots, and carefully wrap each order in craft paper and a plastic bag to keep the roots dark. The trees will be in a dormant state when you pick them up and keeping the roots dark and cool will help maintain their dormancy until you plant them. We recommend that you plant your order as soon as possible. Keep your plants in a cool dark place, like a cellar or garage, until you are ready to plant them. **DO NOT ADD WATER to the bag**. The root gel we add will keep your roots plenty moist for a few days until you get them planted. Dumping water in the bag may cause your roots to rot if left too long before planting. When planting, it is recommended that they are replanted to the original depth. You should be able to easily tell where this was by looking at the trunk. **HAPPY PLANTING!**



Packed Tree Orders



Deciduous Seedlings



Coniferous Transplants in varying sizes





# Lewis County Soil & Water Conservation District 2025 Bare Root Tree & Shrub Sale Order Form

	Species	Aprox. Size	Zone	Soil Preference <sup>1</sup>	Growth Rate <sup>2</sup>	Sun <sup>3</sup>	Pack	Pack	Pack	Pack	Total Quantity	Total Cost
							of 10	of 20	of 50	of 100		
<b>Deciduous</b>	Sycamore	2-0 24-36"	4	SLC-M/D	Fast		\$19	\$ 36	\$ 85	\$ 167		
	White Oak	2-0 24-36"	3	SLC-M	Slow/Moderate		\$19	\$ 36	\$ 85	\$ 167		
	Red Oak	2-0 24-36"	4	SLC-M/D	Moderate		\$19	\$ 36	\$ 85	\$ 167		
	Red Maple	2-0 24-36"	3	SLC-M	Fast		\$19	\$ 36	\$ 85	\$ 167		
	Sugar Maple	2-0 18-24"	3	Loam -M/D	Moderate/Fast		\$24	\$ 48	\$ 115	\$ 226		
<b>Coniferous</b>	Balsam Fir	2-2/P+2 10-18"	3	SLC-M	Slow		\$30	\$ 58	\$ 140	\$ 275		
	Douglas Fir	2-2 15-24"	4	SLC-M/D	Moderate		\$24	\$ 47	\$ 112	\$ 220		
	Col. Blue Spruce	2-2 16-22"	2	SLC-M/D	Slow/Moderate		\$20	\$ 40	\$ 96	\$ 188		
	Norway Spruce	2-2 15-24"	2	Loam Clay-M/D	Moderate/Fast		\$27	\$ 54	\$ 129	\$ 253		
	White Spruce	2-1/2-2 15-24"	2	SLC-M	Moderate		\$22	\$ 42	\$ 101	\$ 198		
	White Pine	2-2 16-22"	3	Acidic M/D	Fast		\$24	\$ 47	\$ 112	\$ 220		
	Red Pine	2-2 14-22"	2	SLC-M	Moderate/Fast		\$20	\$ 40	\$ 96	\$ 188		
	Fraser Fir	3-2/P+2 10-18"	4	M	Moderate		\$27	\$ 54	\$ 129	\$ 253		

Bare Root Shrubs & Fruit Plants are sold individually.

						Price Each	Quantity	Total
<b>Shrubs &amp; Fruit</b>	Red Osier Dogwood	18-24"	2	SLC-M /D	Fast		\$ 1.50	
	Pussy Willow	24-36"	4	Loam-M	Fast		\$ 2.00	
	Common Lilac	2-0 18-24"	3	SLC-M /D	Moderate		\$ 2.00	
	Elderberry	18-24"	3	SLC-M/D	Moderate		\$ 2.00	
	Blackberry (Darrow)	1-0 1-2'	3	SLC-M/D	Moderate		\$ 3.00	
	Raspberry (Latham Red)	2-0	3	SLC-M/D	Moderate		\$ 3.50	
	Blueberry (Jersey)	2-0 15-24"	4	Acidic Required	Moderate		\$ 5.50	
	Blueberry (BlueRay)	2-0 15-24"	4	Acidic Required	Moderate		\$ 5.50	

<b>Packets</b>	Bird & Butterfly Pack	2 Each of: Black Chokeberry, Elderberry, Liatris Spicata, Ninebark, Apricot Beauty Daylily	\$ 25/pack		
	Hosta Pack	2 Each of: Ventricosa, Hyacinthina, Albo Marginata, F. Aureo Marginata, August Moon	\$ 23/pack		
	Nut Tree Pack	2 Each of: White Oak, Burr Oak, Sawtooth Oak, Red Oak, Black Walnut	\$ 25/pack		
	Edible Fruit Pack	2 Each of: Blackberry, Jersey Blueberry, BlueRay Blueberry, Raspberry, Strawberry	\$ 30/pack		

1- Soil Preferences: SLC = Sand, Loam or Clay M=Moist (well drained)  
M/D= Moist (well-drained) or Dry D= Dry



2- Growth Rates: are as listed - Slow, Moderate, Fast, Slow to Moderate or Moderate to Fast

3- Sunlight Preferences: Full Sun= Partial Sun/Partial Shade= Full Shade=

ZONE- Coldest Zone Tolerance

<b>Front Total</b>	
--------------------	--



		Package Size	Order Quantity	Total
<b>Wildflower Seeds</b>		<b>Sunny Wildflower Mix:</b> Perennial Mix. Prefers full sun exposure, Plant height: 25+", Direct sow, Planting depth 1/2", Zones 3-10. Multicolor blooms, attracts pollinators. Fall or Spring planting. 4 ounces covers 250-500 sq ft <b>1oz pkg: \$4.00 each</b> <b>4oz pkg: \$15.00each</b>		
		<b>Partial Shade Wildflower Seed Mix:</b> Annual/Perennial Mix, Partial shade, Plant height: 25+", Direct sow, Planting depth 1/2", Zones 3-10. Multicolor blooms, attracts pollinators. Fall or Spring planting. 4 ounces covers 250-500 sq ft <b>1oz pkg: \$4.00 each</b> <b>4oz pkg: \$15.00each</b>		
<b>Etc.</b>	<b>Marking Flags</b>	36" Wire Post, Fluorescent Pink Plastic Flags	<b>10 for \$ 2.50</b>	
	<b>Fertilizer Tablets</b>	N-P-K (20-10-5) Feeds up to 2 years per tablet	<b>10 for \$ 2.00</b>	

### Orders Due by March 5<sup>th</sup>

Orders are reserved as they are received. Waiting too long to place your order may result in items being out of stock.

**While Supplies Last - No Deliveries - No Returns**





**Pick Up: Thursday April 24<sup>th</sup> or Friday April 25<sup>th</sup>**

**Payment Due With Order!**

<b>Back Total</b>	
<b>Front Total</b>	+
<b>TOTAL DUE</b>	

Due to the perishable nature of nursery stock, the SWCD is not responsible for stock condition after pickup by the customer or if picked up after the scheduled dates. Sizes on order form are estimates. SWCD reserves the right to offer refunds or approved substitutions for stock not available. Nursery stock obtained will be planted for the purpose of conservation.

**Customer Signature Required**       \_\_\_\_\_

<b>Name</b>	
<b>Mailing Address</b>	
<b>City, State, Zip</b>	
<b>Phone #</b>	
<b>Credit Card Number</b>	If preferred, you may phone in credit card orders to: 315-376-6122
_____	CCV _____
<b>Exp.</b> ____ / ____	<b>Billing Zip Code</b> _____
   	
<b>Signature Required for Card</b>	

**Make Checks or Money Orders Payable to: Lewis County SWCD**

*Mail Completed Order Form with Payment to :*

**Lewis County SWCD – Tree Order**

**7356 East Road**

**Lowville, NY 13367**

**\$35 Fee**  
for  
**Returned**  
**Checks**

# Be on the look out for Spotted Lanternfly

The New York State Department of Agriculture and Markets (NYSDAM) announced the spread of the Spotted Lanternfly (SLF) to additional locations across New York State. SLF is an invasive pest that feeds on more than 100 plants and crops, including grapes. It was first found in Pennsylvania in 2014 and now has been detected in 18 states. As the species continues to spread throughout New York State, we urge Lewis County residents to be aware of this invasive pest. Human activity is the prime source of SLF spread as they lay their eggs on vehicles, firewood, outdoor furniture and stone. Not only does SLF feed on plants, but they excrete large amounts of sticky “honeydew” that attracts sooty mold, which interferes with plant growth and yield.

The NYS Department of Environmental Conservation is working with NYSDAM and the US Department of Agriculture to address SLF by finding and treating infestations early.

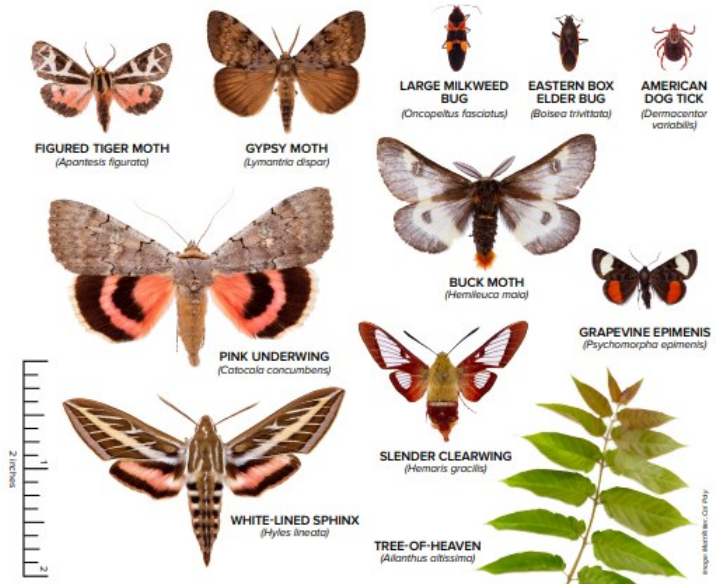
Some signs of infestation that the public should be aware of include;

- Sap oozing from tiny openings on tree trunks
- One-inch-long egg masses that are brownish-gray, waxy and mud-like when new. Old egg masses are brown and scaly.
- “Honeydew” build-up under plants

If you, or someone you know, spot these infestation signs, please take a picture of the insect, egg mass and/or other signs and email to [spottedlanternfly@agriculture.ny.gov](mailto:spottedlanternfly@agriculture.ny.gov). Destroying the egg masses after a picture is taken is the best way to prevent further infestation. Scraping them into a bucket of hot, soapy water or a jar of rubbing alcohol will do the trick.



**Look-Alikes:** SLF is often misidentified as these other common insects



Egg mass  
(seen October-June)

1st instar nymph  
(seen May-July)

4th instar nymph  
(seen July-September)

Adult  
(seen August-November)

## REMINDER:

- Landowners filing for an **Agricultural Exemption** in 2025 must do so by March 1st with your local Town Assessor. In order to file an Agricultural Assessment, you must have a Soil Group Worksheet prepared by the Soil and Water Conservation District. To request this worksheet, please call us at (315) 376-6122.



# 2024 Cover Crops Planted



<b>Funding Source</b> AGNPS– Agricultural Nonpoint Source Abatement & Control Grant Program AEM– Agricultural Environmental Management	<b>Total Acres Planted</b>	<b>Amount Paid to Lewis County Farms</b>
AGNPS Round 27	1,895.2 acres	\$126,978.40
AGNPS Round 28	963.1 acres	\$67,417.00
AGNPS Round 29	2,041.2 acres	\$142,884.00
AEM Round 18	1,017.4 acres	\$84,439.22
<b>Total</b>	<b>5,916.9 acres</b>	<b>\$421,718.62</b>





# Jefferson/Lewis FFA Land Judging



On October 9th, Jefferson and Lewis County Soil and Water Conservation Districts (SWCD) hosted their Land Judging event at Silvery Falls Farm in Lowville, NY. After a 5-year hiatus, this event was brought back in hopes of continuing this annually between Jefferson and Lewis Counties. The day before the event, SWCD staff go out to the chosen farm to dig and judge four separate holes. These holes are scored with the assistance of the USDA/Natural Resources Conservation Service's Soil Scientist, Amy Langner. The day of the event, students are asked to examine the physical features of the land, surface soil and the subsoil. Critical slope, land use, recommended treatments and degree of limitations are also areas that are examined for the scorecard. Prior to the event, the hosting county writes an exam for each school to complete. Overall, we were very pleased with how the day turned out with 55 students from five different schools in attendance. We would like to send out a sincere thank you to Dallen and Cody Farney for hosting this event at their farm, Amy Langner for helping score the holes the day before, and Joe Lawrence for proctoring the day of the event.

## Lewis County Cornell Cooperative Extension (CCE) Grain Bin Safety & Grain Quality Meeting

Cornell Cooperative Extension of Lewis County, Cargill, and NYCAMH; Erik Merrell-Agricultural Safety Educator will provide grain quality practices and awareness of grain bin safety and health training for farmers, farm workers, and truckers in the commercial grain industry and grain storage operations on the farm.

With the increase of grain facilities in NNY, it is time to prevent any potential grain disasters in the farming community before it happens. This event is free, and registration is required to ensure enough food for lunch.

The workshop will be on February 27, 2025 from 10:00am to 3:00pm at the Lewis County Educational Center, 7395 East Road, Lowville, NY 13367. Lunch will be provided by Cargill and at the end of the workshop, you will have the opportunity to visit Aaron Miller's, Eastview Grain facility located on East Road. If you have any questions, please contact Mellissa Spence – Outreach Agriculture Educator at 315-376-5274, [mms427@cornell.edu](mailto:mms427@cornell.edu).

Did You Know?

Lewis County is New York's leading  
Christmas Tree producer!





Lewis County Soil & Water  
Conservation District  
7356 East Road  
Lowville, New York 13367  
[www.lewiscountysoilandwater.com](http://www.lewiscountysoilandwater.com)  
Phone (315) 376-6122

Bulk Rate  
U.S. Postage  
PAID  
Permit No. 97  
Lowville, NY

Tree Order  
Form Inside



*The District would like to thank the businesses,  
organizations and landowners that we have  
worked with to protect natural resources in 2024.  
Lewis County is truly a special place to be  
and working together we can continue  
to accomplish great things.*

*We wish you all a safe and prosperous New Year!*